

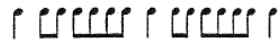
**ILLINOIS SUMMER YOUTH MUSIC
REQUIRED PLACEMENT AUDITION MATERIALS**

Important Note: Student should prepare this material for a placement audition given as part of First Day Registration upon arrival at ISYM.

JUNIOR BAND & ORCHESTRA TUBA

The following Placement Audition scales and musical excerpts are required of JUNIOR participants. ISYM Faculty will evaluate JUNIOR level participants using this material. Metronome markings should be observed.

SCALES: Perform four major scales in the order listed: F – Bb – Eb – G. Use the following pattern: (1) Four/Four meter; (2) Tempo quarter = 60; (3) Play as many octaves as possible within the practical range of the instrument, up and down in the following rhythm:
(4) Scales should be memorized.



Excerpt #1
quarter = 80



Excerpt #2
quarter = 108

