

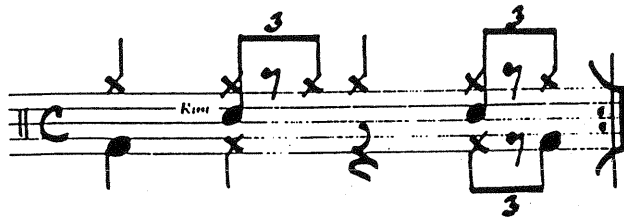
REQUIRED JAZZ CAMP PLACEMENT AUDITION MATERIALS

Important Note: Student should prepare this material for Placement Audition given as part of First Day Registration upon arrival at camp.

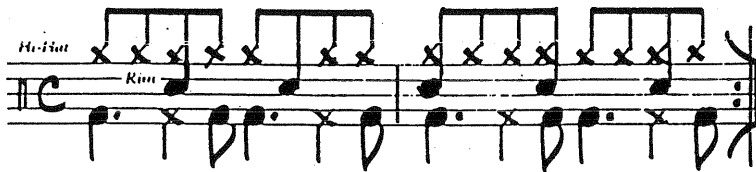
JAZZ DRUM SET

Performance of the following patterns and musical excerpts is required of all participants in ISYM. Tempo markings should be observed.

Pattern #1: play sixteen (16) measures of this swing pattern; $\text{♩} = 120$.



Pattern #2: play sixteen (16) measures of this bossa nova pattern; $\text{♩} = 112$.



Pattern #3: play sixteen (16) measures of this bebop pattern; $\text{♩} = 176$.



(EXCERPTS ON REVERSE SIDE)

J = 160

Brass Hard Swing feel

10

18

Fill

f

Brass

Detailed description: This musical score is for a Brass section in a 'Hard Swing' feel. It consists of six staves. The first staff is labeled 'Brass' and 'Hard Swing feel'. It begins with a melodic line in the first measure, followed by rests in measures 2, 3, and 4. A box containing the number '10' is placed above the staff in measure 4. The second staff continues the melodic line in measure 5, followed by rests in measures 6, 7, and 8. The third staff continues the melodic line in measure 9, followed by rests in measures 10, 11, and 12. The fourth staff continues the melodic line in measure 13, followed by rests in measures 14, 15, and 16. The fifth staff continues the melodic line in measure 17, followed by rests in measures 18 and 19. The sixth staff is labeled 'Brass' and contains a more complex melodic line starting in measure 20, with a dynamic marking of 'f' below it. The score ends in measure 21.

EXCERPT B:

J = 144

(ENS.)

53 54 55 56

57 58 59 60

61 62 63 64

65 66 67 68

71 (4) (8)

69 70 ff 71 mp 73 74 75 76 77 78

Detailed description: This musical score is for 'EXCERPT B' in a tempo of J = 144. It consists of six staves. The first staff is labeled '(ENS.)' and contains a melodic line starting in measure 53, with a dynamic marking of 'ff' at the end. The second staff continues the melodic line in measure 54, followed by rests in measures 55 and 56. The third staff continues the melodic line in measure 57, followed by rests in measures 58, 59, and 60. The fourth staff continues the melodic line in measure 61, followed by rests in measures 62, 63, and 64. The fifth staff continues the melodic line in measure 65, followed by rests in measures 66, 67, and 68. The sixth staff is labeled 'Fill' and contains a wavy line representing a fill in measure 69, followed by rests in measures 70, 71, 72, 73, 74, 75, 76, 77, and 78. The score ends in measure 78.